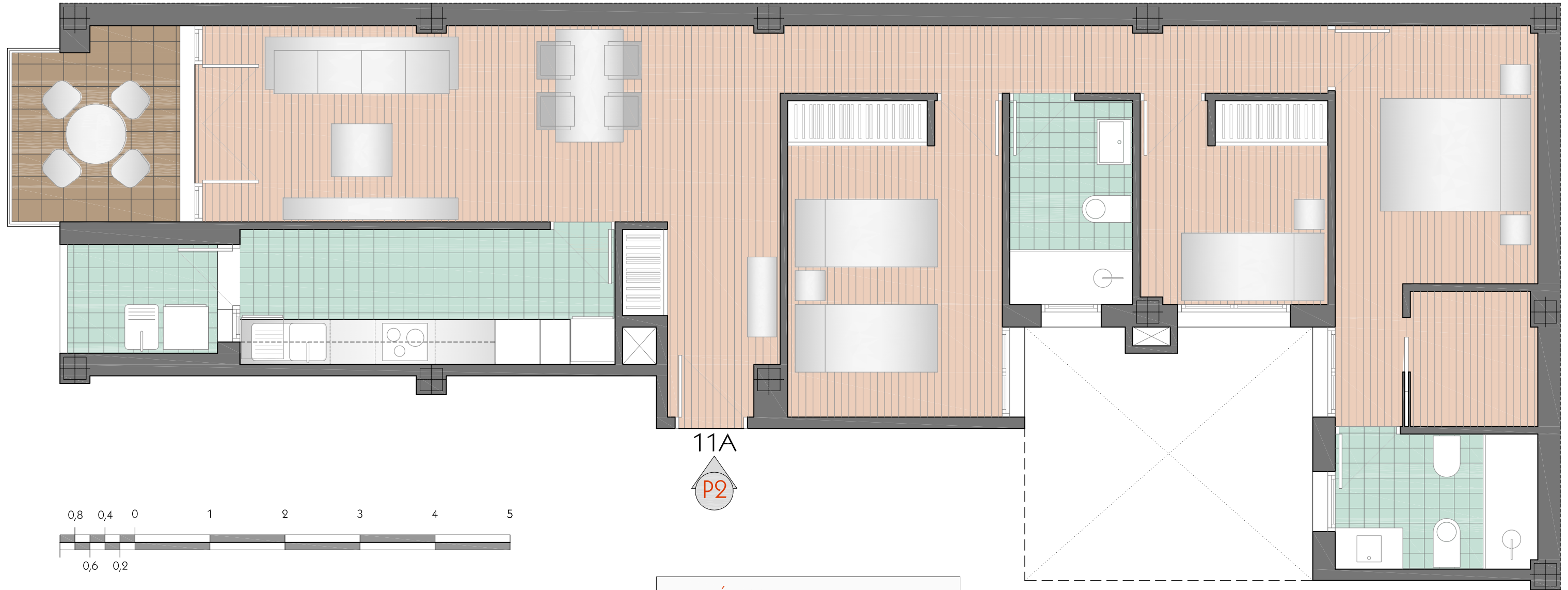
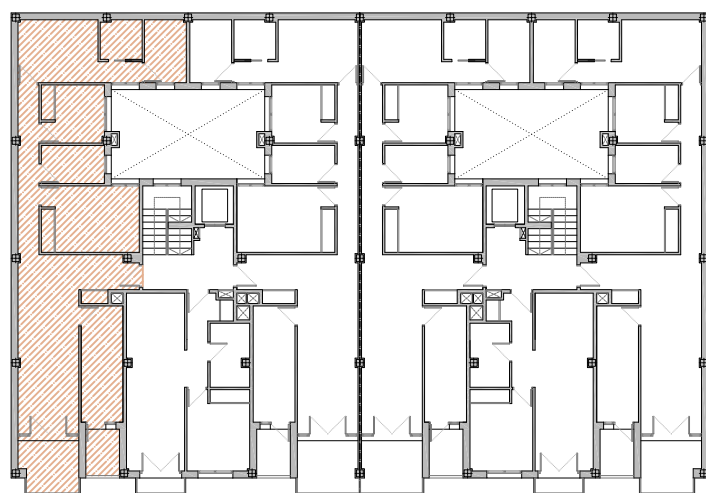


EDIFICIO VICTORIANO MATEU



ZAGUÁN 11 A. PUERTA 2

PLANTA 1ª



| | |
|------------------------|-----------------------|
| PLANTA 1ª | |
| DORMITORIOS 3 | BAÑOS 2 |
| SUPERFICIE ÚTIL: | 88,83 m ² |
| SUPERFICIE CONSTRUIDA: | 105,36 m ² |
| SUP. CONST. ELEM. COM: | 119,02 m ² |
| SUPERFICIE TERRAZA: | 5,48 m ² |

